

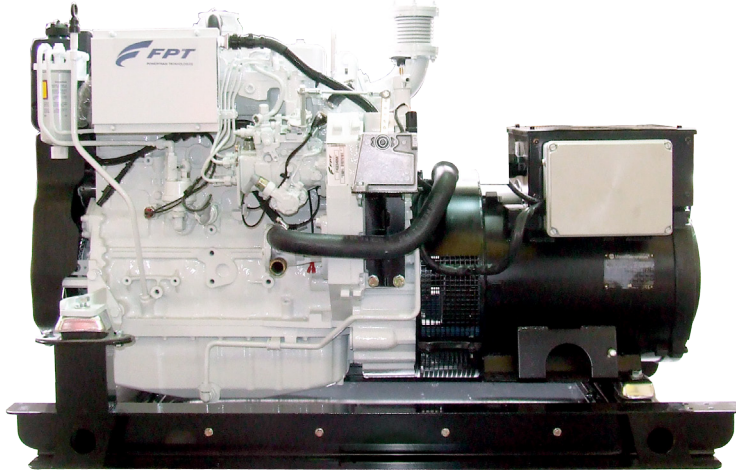


HIMOINSA®
THE ENERGY

MODELS: HFMW 40 T5
HFMW 50 T6

HIMOINSA MARINE SYSTEMS

Powered by FPT_IVECO



THREE PHASE



MA12



DIESEL



WATER-COOLED

SERVICE

	Frequency (Hz)	Voltage (V)	Power*		
			kVa	Kw	Amperes (A)
HFMW-40 T5	50	400/230	40	32	87
	50	380/220	40	32	92
HFMW-50 T6	60	480/277	50	40	58
	60	440/254	50	40	63
	60	220/127	50	40	126
	60	208/120	50	40	133,5

* **Continuous power:** Unlimited running time at rated power.

Ambient conditions of reference: 1000 mbar, 25 °C, 30% relative humidity, 30°C T^a raw water
Three phase output at 0,8 power factor.

WEIGHT AND DIMENSIONS

	Length (mm)	Width (mm)	Height (mm)	Weight (dry) kg	Sound level dB(A)*
Without sound shield	1425	796,5	884	822,5	-
With sound shield	1700	930	1056,5	967,5	-

*Sound power level at 7m, by 2000/14/CE Noise emissions outdoor equipment (amened by 2005/88/CE)

HIMOINSA HEADQUARTERS

Fábrica: Ctra. Murcia • San Javier, Km.23,6 / 30730 SAN JAVIER (Murcia) Spain. Tel. +34 968 19 11 28 • Fax +34 968 19 12 17
info@himoinsa.com • www.himoinsa.com

Centros Productivos: ESPAÑA • FRANCIA • INDIA • CHINA • USA • BRASIL

Filiales: ITALIA • PORTUGAL • POLONIA • ALEMANIA • SINGAPOUR • EMIRATOS ARABES • MEXICO • PANAMA • ARGENTINA • ANGOLA





**MODELS: HFMW 40 T5
HFMW 50 T6**

HIMOINSA MARINE SYSTEMS

Powered by FPT_IVECO

ENGINE SPECIFICATIONS

Rated Output	kWm		
Manufacturer		FPT IVECO	
Model		NEF 100 N45MNAM10	
Injection Type		Direct	
Aspiration type		Turbo charged and after cooled	
Cylinders Arrangement		4 - L	
Bore and Stroke	mm	104 x132	
Displacement	L	4,5	
Cooling system		Liquid (water+50%glycol)	
Lube Oil Specifications		ACEA E3 - E5	
Compression Ratio		17,5:1	
Fuel Consumption	rpm	1500	1800
	Fuel Consumption100%	l/h	9,6 11,7
	Fuel Consumption 80%	l/h	7,7 9
	Fuel Consumption 50%	l/h	5,9 6,9
Lube Oil Consumption Full Load		<0,2 fuel consumption	
Total oil capacity including tubes, filters	L	11,5	
Total Coolant Capacity	L	21	
Governor		Mechanical	
Air filter		Dry	
Exhaust Type		Suitable for marine enviroment	
Inner diameter exhaust pipe	mm	70	
Outer diameter inlet raw water	mm	45	
Outer diameter outlet raw water	mm	45	

GENERATOR SPECIFICATIONS

Poles	n°	4	
Winding Conections (standard)		Star- Serie	
Frame Mounting		SAE3 - 10	
Bearing		Single bearing	
Coupling	Type	B2 (flexible disc.)	
Winding protection		Windings treatment against humidity enviroment	
Enclosure (according IEC-34-5)	Class	IP23	
Insulation		F	
Refrigeration		Forces	
Voltage regulation		±2%	
Exciter system		self-excited,brushless	
VoltageRegulator		A.V.R (Electronic)	





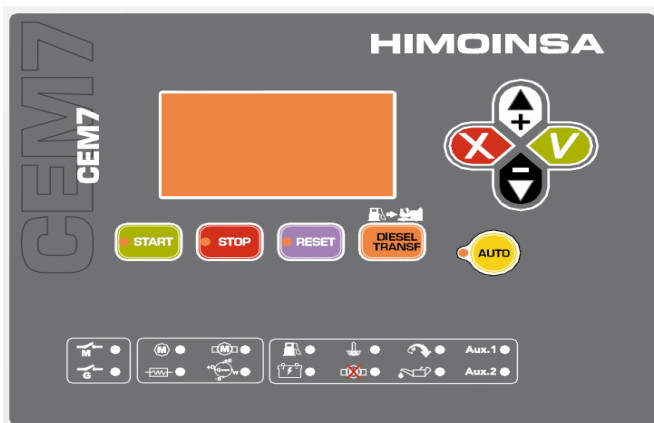
HIMOINSA®
THE ENERGY

MODELS: HFMW 40 T5
HFMW 50 T6

Powered by FPT_IVECO

HIMOINSA MARINE SYSTEMS

CONTROL PANEL



Descripción General

La central **CEM7** es un equipo de supervisión y control de alimentación a través de grupo electrógeno. La central está compuesta de: 1.El modulo de VISUALIZACIÓN 2. El módulo de MEDIDAS.

MÓDULO DE VISUALIZACIÓN Realiza las tareas informativas del estado del grupo electrógeno, así como permitir al usuario comandar, programar y configurar el funcionamiento de la central. Se compone de un display retroiluminado y distintos LEDs para la monitorización del estado de la central y pulsadores que permiten al usuario comandar y programar la central.

MÓDULO DE MEDIDAS Realiza las tareas de supervisión y control de la central. Dicho módulo se sitúa a fondo de panel para disminuir el cableado y así aumentar la inmunidad de la central frente a ruido electromagnético.

Todas las señales, sensores y actuadores se cablean al módulo de medidas. La conexión entre el módulo de medidas y el de visualización se realiza mediante un bus de comunicación CAN, lo que permite la interconexión de módulos adicionales con lo que se garantiza la escalabilidad de la central.

Controllers Features

GENERATOR READINGS

- Voltage among phases
- Voltage among phases and neutral
- Amperage
- Frequency
- Apparent power(kVA)
- Active power (kW)
- Reactive power (kVAr)
- Power factor

ALTERNATOR PROTECTIONS

- High frequency
- Low frequency
- High voltage
- Low voltage
- Short-circuit
- Asymmetry among phases
- Incorrect phase sequence
- Inverse power
- Overload
- Genset digital droop

ENGINE PROTECTIONS

- High water temperature
- High coolant temperature by sensor
- Low engine temperature by sensor
- Low oil pressure
- Low oil pressure by sensor
- Low coolant level
- Low coolant shutdown
- Fuel storage
- Fuel storage by sensor
- Stop failure
- Battery voltage failure
- Battery charge alternator failure
- Overspeed
- Underspeed
- Start failure
- Emergency stop

ENGINE READINGS

- Coolant temperature
- Oil pressure
- Fuel level (%)
- Battery voltage
- R.P.M
- Battery charge alternator voltage



HIMOINSA HEADQUARTERS

Fábrica: Ctra. Murcia San Javier, Km.23,6 / 30730 SAN JAVIER (Murcia) Spain.
Tel. +34 968 19 11 28 • Fax +34 968 19 12 17 • info@himoinsa.com • www.himoinsa.com





HIMOINSA®
THE ENERGY

**MODELS: HFMW 40 T5
HFMW 50 T6**

Powered by FPT_IVECO

HIMOINSA MARINE SYSTEMS

ENGINE PANEL



CHARACTERISTICS:

- Coolan Temperature Indicator
- Engine Oil PressureIndicator
- Revolution Counter
- Voltmeter
- Indicator and Alarm Module

GROUP PANEL S2



Panel with thermal
magnetic protection

CHARACTERISTICS:

- Electronic Control Panel CEM7
- Metalic Panel
- Thermal Magnetic Protection
- Differential Relay



HIMOINSA HEADQUARTERS

Fábrica: Ctra. Murcia San Javier, Km.23,6 / 30730 SAN JAVIER (Murcia) Spain.
Tel. +34 968 19 11 28 • Fax +34 968 19 12 17 • info@himoinsa.com • www.himoinsa.com





HIMOINSA®
THE ENERGY

MODELS: HFMW 40 T5
HFMW 50 T6

HIMOINSA MARINE SYSTEMS

Powered by FPT_IVECO

GENERATING SETS STANDARD AND OPTIONAL FEATURES

OPEN SET VERSION

Engine

- Diesel engine
- 4strokes-cycle
- Water-cooled
- 12V Electrical system
- Water separator decanting filter (no visible level)
- Electronic governor
- Bulbos de ATA
- Bulbos de BTA
- Dry air cleaner
- Dry exhaust elbow with flexible joint
- Mobile componets guards

Alternator

- Self-excited and self-regulated
- 4 polos
- A.V.R (Electronic)
- IP23 protection degree
- Insulation F class
- Single bearing
- Coupling flexible disc

Electrical system

- Control and power electric panel,with measurements devices and controller
- 4 poles circuit breaker
- Earth leakage protection adjustable (time & sensibility)
- Battery charge alternator with ground connection
- Ground connectio nelectrical installation with connection ready for bonding
- Starting battery installed and connected to the engine (supports included)*

SOUNDPROOFED VERSION

- Sound attenuated canopy made of high quality steel metal
- High mechanical strenght
- Powser coating (poliester epoxidico)
- Easy acces for service mainteance (coolant,oil,filters without removed canopy)
- Emergency stop button
- System ECCS (Enviromental Conditions Control System)

*Scope of supply standard for sound proofed version



HIMOINSA HEADQUARTERS

Fábrica: Ctra. Murcia San Javier, Km.23,6 / 30730 SAN JAVIER (Murcia) Spain.
Tel. +34 968 19 11 28 • Fax +34 968 19 12 17 • info@himoinsa.com • www.himoinsa.com





**MODELS: HFMW 40 T5
HFMW 50 T6**

HIMOINSA MARINE SYSTEMS

Powered by FPT_IVECO

APPLICATION DATA

Exhaust System		1500 rpm	1800 rpm
Maximum exhaust temperature	°C	448	518
Exhaust Gas Flow	kg/h	224,1	269,8
Maximum allowed back pressure	kPa (mbar)	7(70)	
Exhaust Flange Size(external diameter)	mm	70	

Air Inlet System		1500 rpm	1800 rpm
Intake Air Flow	m³/h	180	218
Alternator fan air flow	m³/s	0,21	0,25
Engine room ambient temperature	°C	< 45	
Air intake restriction,clean filter	kPa (mbar)	3,5 (35)	
Air intake restriction,dirty filter	kPa (mbar)	6,5 (65)	

Cooling System		1500 rpm	1800 rpm
Recommended Coolant	Type	Liquid (water + 50% glicol)	
Coolant pump flow	l/min	n/a	n/a
Sea water pump height above sea level	m	< 2	
Intake pipeline diameter	mm	34,6	
Outlet pipe outer diameter	mm	45	

Starting System		1500 rpm	1800 rpm
Battery-minimum capacity recommended	Ah	120	
Battery-minimum cold cranking capacity recommended	A	650	
Voltage	V	12	

Fuel System		1500 rpm	1800 rpm
Fuel specifications	Type	EN 590	
Feed pump max suction head	m	< 2	
Fuel inlet max restriction	kPa (mbar)	15(150)	
Max fuel temperature	°C	40	



HIMOINSA HEADQUARTERS

Fábrica: Ctra. Murcia San Javier, Km.23,6 / 30730 SAN JAVIER (Murcia) Spain.
Tel. +34 968 19 11 28 • Fax +34 968 19 12 17 • info@himoinsa.com • www.himoinsa.com



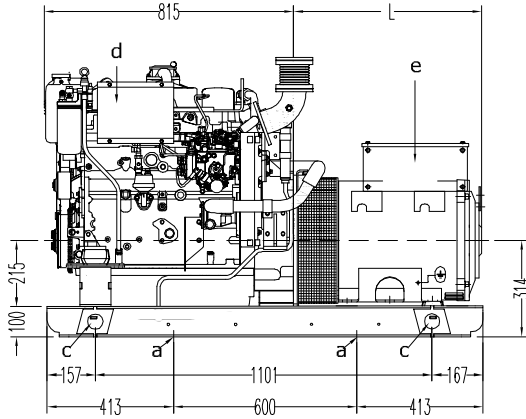


HIMOINSA®
THE ENERGY

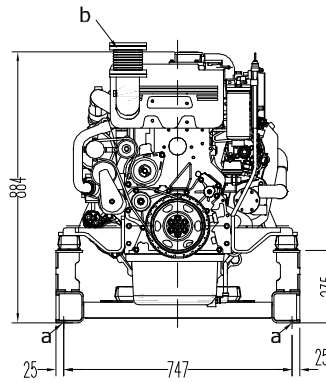
**MODELS: HFMW 40 T5
HFMW 50 T6**

Powered by FPT_IVECO

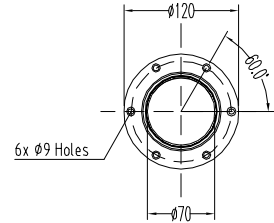
HIMOINSA MARINE SYSTEMS



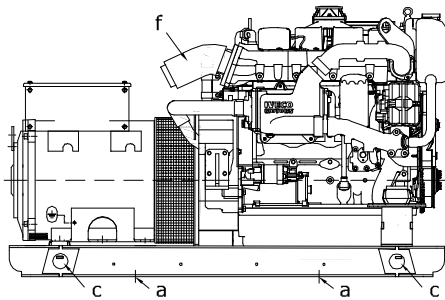
VISTA LATERAL IZQUIERDA
LATERAL LEFT VIEW



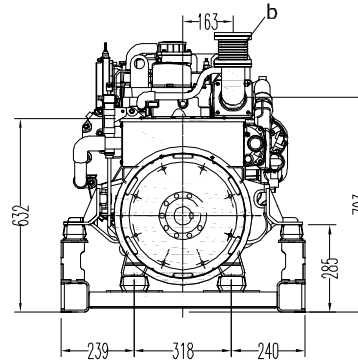
VISTA FRONTAL
FRONT VIEW



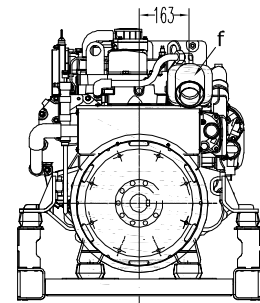
[b] - DETALLE SALIDA ESCAPE SECO
[b] - EXHAUST DRY DETAIL
Escala / Scale: 1/8



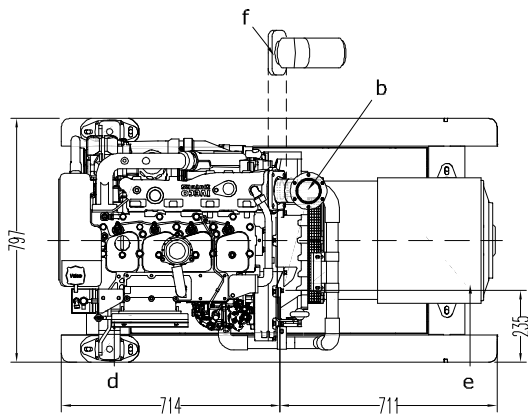
VISTA LATERAL DERECHA
LATERAL RIGHT VIEW



VISTA POSTERIOR CON ESCAPE SECO
REAR VIEW WITH EXHAUST DRY



VISTA POSTERIOR CON ESCAPE HÚMEDO
REAR VIEW WITH EXHAUST WET



VISTA SUPERIOR
TOP VIEW

	NOTAS	NOTES
a	FIJACIÓN GRUPO (4xØ18mm)	FLOOR TO FASTENING (4xØ18mm)
b	SALIDA ESCAPE EN SECO Ø70 mm	EXHAUST DRY OUTLET Ø70 mm
c	PUNTO DE IZADO	HOISTED POINT
d	MOTOR IVECO NEF45 MNA M10	ENGINE IVECO NEF45 MNA M10
e	ALTERNADOR MARELLI MJB 200 SA	ALTERNATOR MARELLI MJB 200 SA
f	OPCIONAL ESCAPE HÚMEDO	EXHAUST WET OUTLET



HIMOINSA HEADQUARTERS

Fábrica: Ctra. Murcia San Javier, Km.23,6 / 30730 SAN JAVIER (Murcia) Spain.
Tel. +34 968 19 11 28 • Fax +34 968 19 12 17 • info@himoinsa.com • www.himoinsa.com



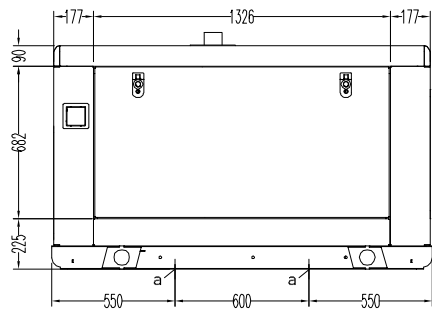


HIMOINSA®
THE ENERGY

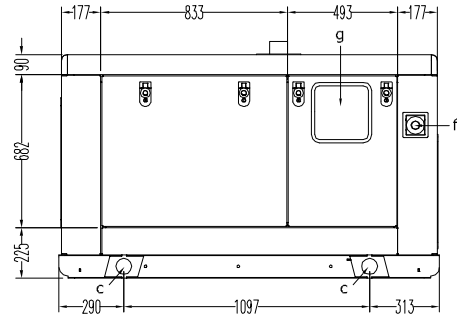
**MODELS: HFMW 40 T5
HFMW 50 T6**

HIMOINSA MARINE SYSTEMS

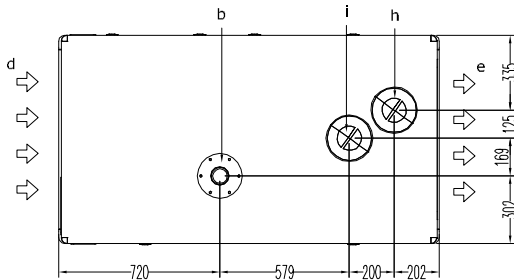
Powered by FPT_IVECO



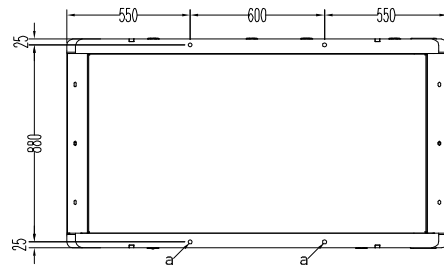
VISTA LATERAL DERECHA / LATERAL RIGHT VIEW



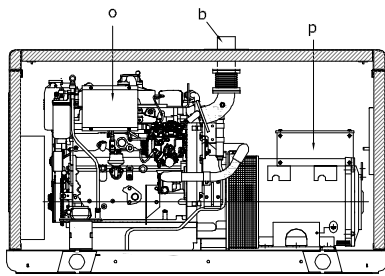
VISTA LATERAL IZQUIERDA / LATERAL LEFT VIEW



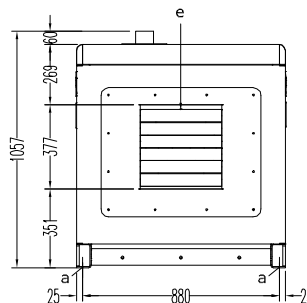
VISTA SUPERIOR / UPPER VIEW



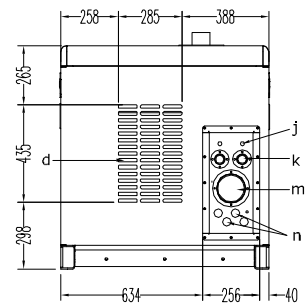
VISTA INFERIOR / LOWER VIEW



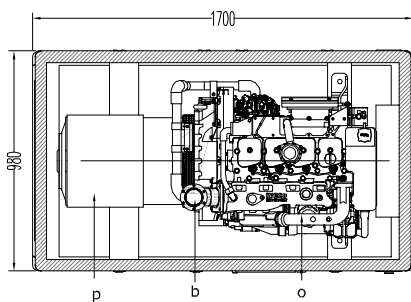
VISTA LATERAL INTERIOR / INTERIOR LATERAL SECTION



VISTA FRONTAL / FRONT VIEW



VISTA POSTERIOR / REAR VIEW



VISTA SUPERIOR INTERIOR / INTERIOR UPPER VIEW

	NOTAS	NOTES
a	FIJACIÓN GRUPO (4xØ18mm)	FLOOR TO FASTENING (4xØ18mm)
b	SALIDA ESCAPE EN SECO Ø70 mm	EXHAUST DRY OUTLET Ø70 mm
c	PUNTO DE IZADO	HOISTED POINT
d	ENTRADA DE AIRE	AIR INLET
e	SALIDA DE AIRE	AIR OUTLET
f	PARADA DE EMERGENCIA	EMERGENCY STOP
g	PUERTA DE ACCESO A CUADRO	DOOR CONTROL BOX
h	ACCESO LLENADO LÍQUIDO REFRIGERANTE	COLLANT FILL ACCESS PORT
i	ACCESO LLENADO ACEITE MOTOR	OIL FILL ACCESS PORT
j	CONEXIONES EXTERIORES COMBUSTIBLE	FUEL OIL EXTERNAL CONNECTION
k	CONEXIONES EXTERIORES AGUA DE MAR	SEA WATER INLET / OUTLET
m	SALIDA ESCAPE HÚMEDO	EXHAUST WET OUTLET
n	SALIDA DE CABLE DE POTENCIA	OPENING FOR CUSTOMER LOAD LEADS



HIMOINSA HEADQUARTERS

Fábrica: Ctra. Murcia San Javier, Km.23,6 / 30730 SAN JAVIER (Murcia) Spain.
Tel. +34 968 19 11 28 • Fax +34 968 19 12 17 • info@himoinsa.com • www.himoinsa.com

